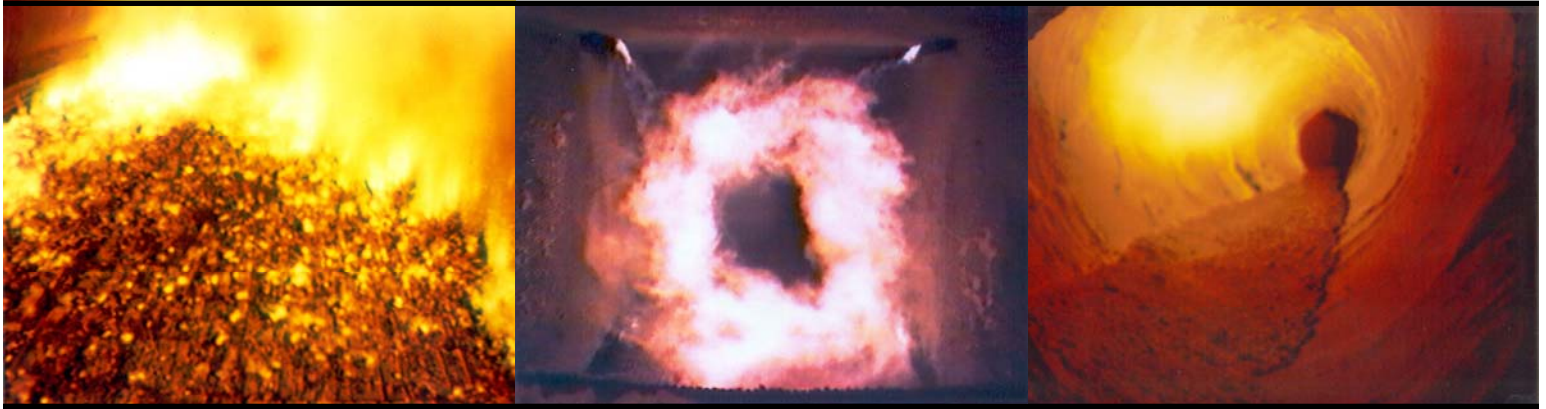


# SF12 HIGH TEMPERATURE CCTV SYSTEM

FOR

**BOILERS ▪ KILNS ▪ FURNACES ▪ INCINERATORS**



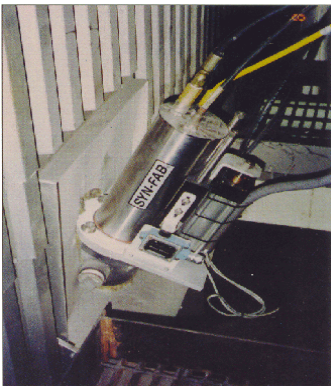
**SYN-FAB®** SF12 series imaging systems represent the state-of-the-art in high temperature process monitoring. Each system utilizes a high-tech combination of electronics, optics and protection to produce sharp, long lasting video of your process. The SF12C is our most popular high temp system and is suitable for monitoring most boilers, furnaces and kilns. The SF12C produces a true color image of your process. The SF12SP is a special application system that can be viewed stand alone or fed to one of our **SPECTRUM™** or **PYROVIPER™** image processing systems.

## SF12 HIGH TEMPERATURE CCTV SYSTEMS FEATURES

- ▶ Patented **Bright Image Optical System** for sharp images
- ▶ Quickchange construction for easy installation and maintenance
- ▶ Modular design for easy option add-ons and upgrades
- ▶ Easy to handle, compact design
- ▶ Loaner systems and 24 hour service for emergencies
- ▶ Indestructible **STEELON™** housings to protect electronic components
- ▶ Advanced lens design for low air consumption, wider field of view and easy assembly/disassembly
- ▶ High performance, ruggedized imagers for increased durability.

## SYSTEM OPTIONS

- ▶ Balanced draft and positive pressure wallboxes for permanent/semi-permanent installation
- ▶ Lens lengths available from 12" to 72" with straight ahead, right angle, or 45° obtuse line of sight
- ▶ Automatic retract assemblies
- ▶ Image processing and analysis equipment for temperature measurement
- ▶ Portable cart assembly for diagnostics and testing
- ▶ Air filtration systems
- ▶ Digital recorders, monitors, switchers and other video equipment
- ▶ Five field-of-view lenses available from telephoto to super wide angle
- ▶ Fiber optic and wireless video/data transmission
- ▶ Digital output and Network cameras available for most applications
- ▶ Remote or integral camera electronics and controls
- ▶ Custom options for special needs.



## BENEFITS TO OPERATORS

- ▶ Maximized efficiency and capacity by showing fuel and air flow in the burning zone
- ▶ Reduced emissions by improving performance
- ▶ Increased safety margins by helping detect tube leaks and other problems before major damage occurs
- ▶ Helps reduce slag, clinker, and ash build-up resulting in fewer shutdowns and lower maintenance cost
- ▶ Aiding startups and troubleshooting burner malfunctions
- ▶ Helps in shaping and positioning fuel beds

**SYN-FAB® INC.**

**HIGH TEMPERATURE & INDUSTRIAL PROCESS MONITORING SYSTEMS**

7863 Schillinger Park Road ▪ Mobile, Alabama ▪ 36608 ▪ USA  
Phone (251) 633-4942 ▪ Fax (251) 633-2514 ▪ [www.synfab.com](http://www.synfab.com)